

ADVANCED POWDER HANDLING SOLUTIONS
for food industry and bakeries

Fillermatic™

auger filler for powders and granulates



POWDER
TECHNIC

ADVANCED POWDER HANDLING SOLUTIONS

for food and process industry

Fillermatic SW40 features and benefits

1. Separate heavy-duty gear motors for auger and agitation blade

- ▶ You can adjust the agitation blade to rotate at various speeds depending on the clogging characteristics of the powder

2. Specially designed auger which eliminates flooding-through with free flowing powders

- ▶ You can use one single equipment with all kinds of powders

3. Stainless steel hopper with a fast-open clamps makes it easy and quick to remove the hopper for cleaning

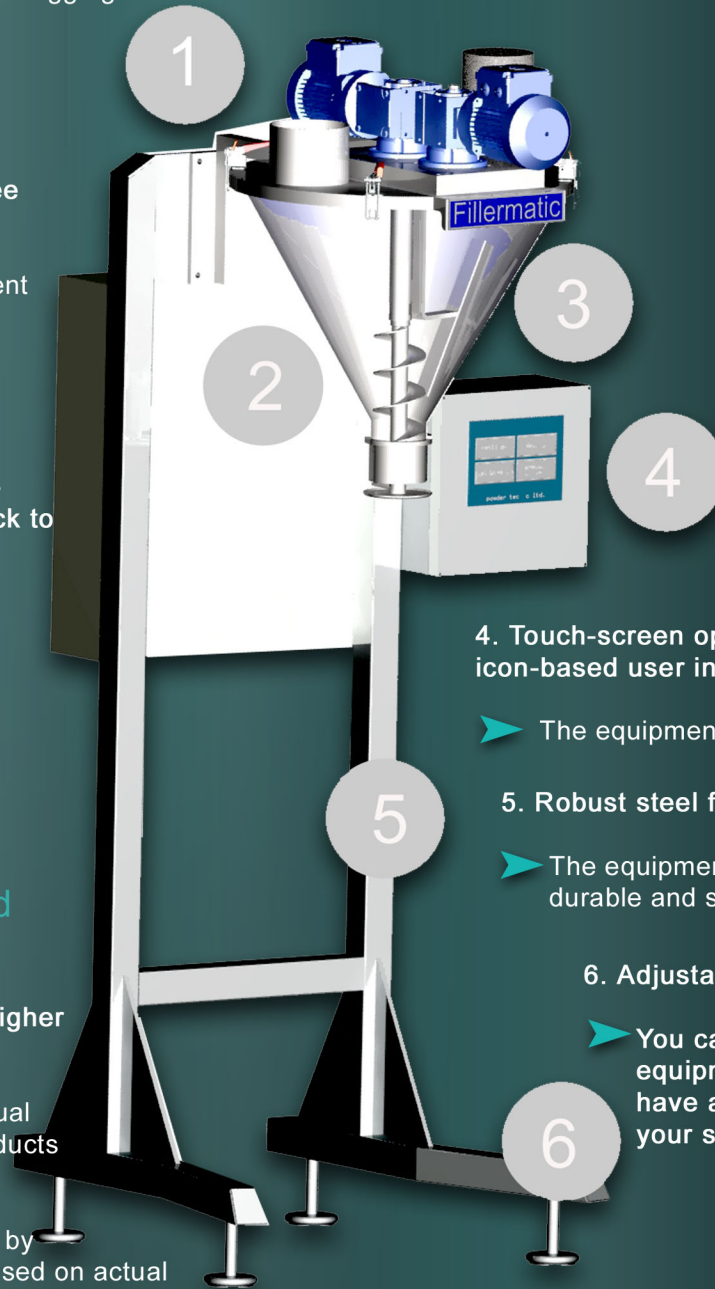
- ▶ You will save time and money in cleaning

Fillermatic AW40 features and benefits

7. Legal-for-trade classified checkweigher connected to PLC

- ▶ You can check each product's actual fill weight and be sure that all products are within tolerances
- ▶ You can enhance the fill accuracy by adjusting the auger revolutions based on actual fill weights. This feature improves productivity

- ▶ Improved productivity: Each fill is faster and more accurate than hand-filling with a scoop.
- ▶ Improved ergonomics and working conditions. Minimizes the need of stressful and un-ergonomic handling of material.



ADVANCED POWDER HANDLING SOLUTIONS

for food and process industry



Icon-based touch screen interface makes Fillermatic extremely easy to use.



Fillermatic is suitable for all types of powders and granules. The product can be packed in to boxes, pouches etc.



The product is easy to disassemble for cleaning.

Overview:

Fillermatic SA40 auger feeder is an efficient and economical solution for packaging of various small packages. The equipment is capable of filling up to 15-20 packages per minute with an accuracy of 0.5-1%. It is suitable for almost all dry powders and granulates, both free-flowing and non-free flowing. The flooding of easily flowing powders has been completely eliminated.

Operation principle

The function of the Fillermatic is based on a PLC and a highly sensitive rotary encoder, which measures the revolutions of the auger shaft. A PLC controller converts the desired fill-weight into revolutions of the auger. With a feed back from the rotary encoder the PLC controls a servo-driven gear motor to repeat the filling cycles at an amazing filling speed, accuracy and repeatability.

The agitation blade above the auger rotates breaking any bridge that tends to form in non-free flowing powders. The agitation blade extends right down to the throat of the funnel preventing rat-holing and cavitation and ensuring that the flights are fully filled.

FILLERMATIC MODELS



Fillermatic® SA40 auger feeder

- for semi-automatic packing of free-flowing and non-free flowing powders
- package sizes: 50 g... 15 kg
- dosing rates: 20 units/ minute
- dosing accuracy: +/- 1 %

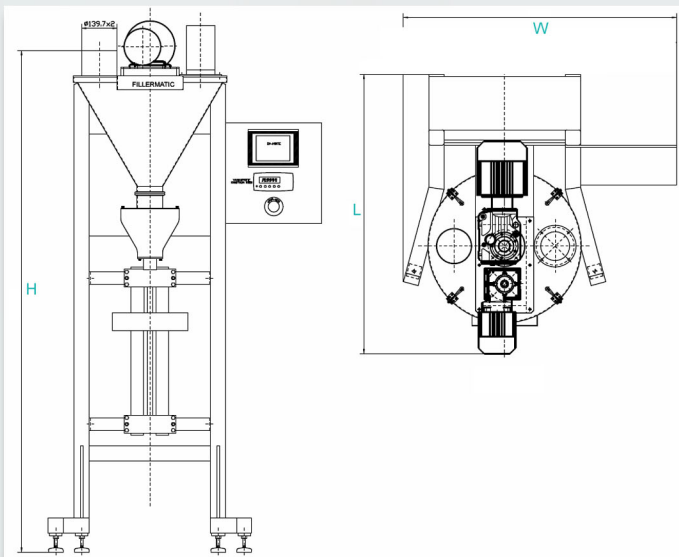


Fillermatic® SW40 auger feeder

- for semi-automatic packing of free-flowing and non-free flowing powders
- legal-for-trade checkweigher with a feedback to the PLC
- package sizes: 50 g... 15 kg
- dosing rates: 20 units/ minute
- dosing accuracy: +/- 1 %

Technical specifications

Manufacturer: Powder Technic Ltd.
Suitability: All dry powders and granulates (protein powders, ground coffee, salt, flakes..
Filling rate: 5..30 fills per minute
Package size: 50 g... 15 kg
Filling accuracy: +/- 0.5..2 % depending on the product
Operation mode: Semi-automatic
Hopper volume: 40 l
Operation panel: Touch screen, 320 x 240 px, 64k colors
Control system SA40/SW40:
-Icon-based user interface in English
-Calibration settings memory
-Quick-adjust feature to increase/decrease the auger revolutions for better filling accuracy
- Error diagnostics
SW40 extra features:
Checkweigher R320
- Legal-for-trade Rinstrum checkweigher
- Calibrated and connected to PLC
- Approvals: NSC, NMI (4000 divisions at 0.8µV/division
Construction material:
-Parts in contact with the product: Stainless steel AISI304
-frame: mild steel, epoxy painted
Surface finishing: Electrolyte polished
Interface: 400 V, 25A

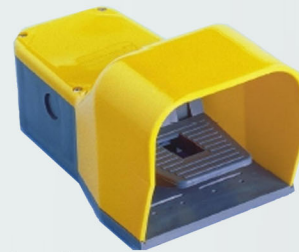


Main dimensions:
H=1985 mm, W=1080 mm, L=1105 mm

Accessories



Adjustable dosing table
- manually adjustable dosing table makes filling of various packages easy and ergonomic
- dust-proof, robust structure



Foot switch
- to start the fill without pressing the start button
- connected to the electric cabinet



Adapter funnel
-reduces the size of the discharge outlet